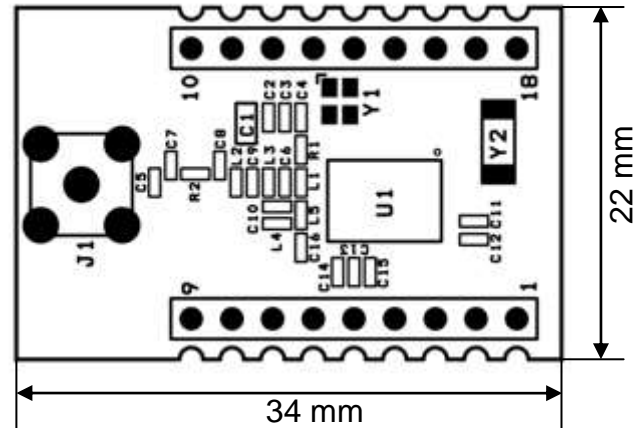
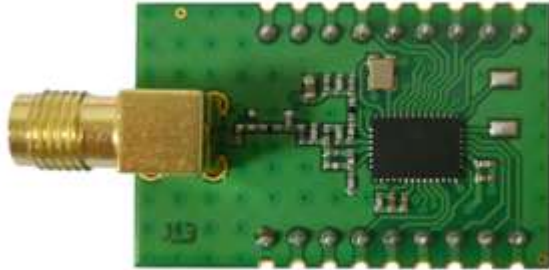


MRF01

868MHz Radio Module



Features

- Power Supply: 3.3 Vdc, 50 mA @ +13 dBm on trasmission
- Radio power: +13 dBm
- Radio frequencies: 867.2, 868.2, 867.7, 868,7 MHz
- Radio channels: 4
- Configurable Frequency Hopping (AFA)
- Configurable Listen Before Talk (LBT)
- 3.3 V TTL Serial interface
- Serial speed : 9600, 19200, 38400, 57600, 115200 bps
- Configuration by serial commands
- 8 configurable GPIO
- 1 analog input
- 1 I2C port
- SMA antenna connector (optional)
- THT o SMT mounting
- Dimension: 34x22x2.7 (LxHxP)

Pin-out

PIN	NAME	Description
1	AIN1	Analog Input
2	C2D	C2 Debug Interface
3	nRST/C2CK	Device Reset / C2 Debug Interface
4	IRQEXT	Device Interrupt
5	TX	UART0 Tx
6	RX	UART0 Rx
7	SDA	I2C Data
8	SCL	I2C Clock
9	GND	Ground
10	VDD	3.3 V
11	GPIO1	Digital Input Output
12	GPIO2	Digital Input Output
13	GPIO3	Digital Input Output
14	GPIO4	Digital Input Output
15	GPIO5	Digital Input Output
16	GPIO6	Digital Input Output
17	GPIO7	Digital Input Output
18	GPIO8	Digital Input Output

Rev. 01/14