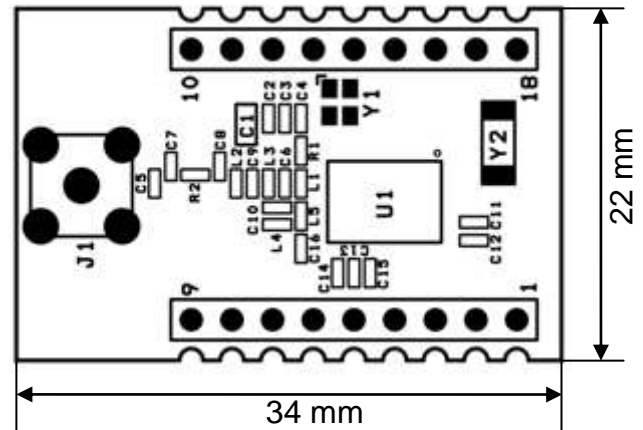
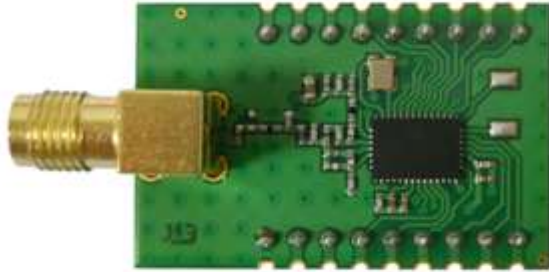


MRF01

868MHz Radio Module



Features

- Alimentazione: 3.3 Vdc
- Consumo @ 3.3 V: 50 mA @ +13 dBm in trasmissione
- Potenza radio: +13 dBm
- Frequenze radio: 867.2, 868.2, 867.7, 868,7 MHz
- Numero canali: 4
- Frequency Hopping (AFA) impostabile
- Listen Before Talk (LBT) impostabile
- Interfaccia seriale TTL 3.3 V
- Velocità seriale : 9600, 19200, 38400, 57600, 115200 bps
- Configurazione mediante comandi seriali
- 8 GPIO configurabili
- 1 ingresso analogico
- 1 porta seriale I2C
- Connettore SMA per antenna (opzionale)
- Montaggio THT o SMD
- Dimensioni: 34x22x2.7 (LxHxP)

Pin-out

PIN	NAME	Description
1	AIN1	Analog Input
2	C2D	C2 Debug Interface
3	nRST/C2CK	Device Reset / C2 Debug Interface
4	IRQEXT	Device Interrupt
5	TX	UART0 Tx
6	RX	UART0 Rx
7	SDA	I2C Data
8	SCL	I2C Clock
9	GND	Ground
10	VDD	3.3 V
11	GPIO1	Digital Input Output
12	GPIO2	Digital Input Output
13	GPIO3	Digital Input Output
14	GPIO4	Digital Input Output
15	GPIO5	Digital Input Output
16	GPIO6	Digital Input Output
17	GPIO7	Digital Input Output
18	GPIO8	Digital Input Output

Rev. 01/14